



digital murales

**PREPARATION OF TAT-
TOOWALL PRINTS OF BIG
DIMENSIONS DIVIDED IN
MORE PANELS WITH
JUNCTIONS**

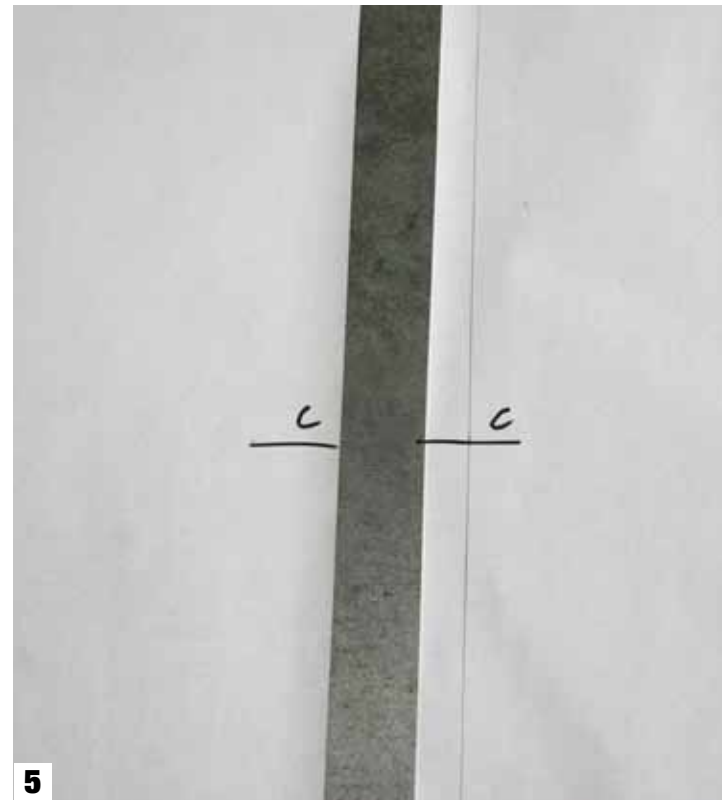


Once the image is decided, the digital elaborations are finished and the printing file is ready, you shall print the decoration with the function 'mirror'. When the shorter side of the decoration is longer than the height of the TATTOOWALL paper, it must be divided in more panels. The reference of each panel must be signed on the miniature prospect (suggested scale 1:10), indicating the cuts, the down side and the progressive number **(1)**. These references must also be signed on the printed decoration panels **(2)**. When the panels are printed, check all the overlaps – 2 cm each – and check that the image junctions are correct all through their length. Sign a few junction references on both panels. Unite all the junction references with a line throughout the length of the panel **(3-4)**.



This line will be signed on the side which will later be united with the next panel.

After having numbered, signed the center **(5)** and signed the overlap line on each panel, coat evenly the surface of the image with white P1 using a roll brush **(6)**. The white P1 helps increasing the print's elasticity in case of very rough and uneven wall surface, or in case of color or grey concrete walls when the image to be transferred should not be influenced by the wall color. **ATTENTION:** before proceeding please check the consistency of the wall. If it looks fragile or crumbling, or if it is colored with tempera paintings, please use a fixative product. Please check the dimensions of the wall and/or surface to be decorated and sign the reference of the center and of the width of the first panel **(7-8)**.



Protect the pavement with paper or nylon. Using paper tape, sign the perimeter of the decoration on the wall and coat it with P2 using a brush or a roll brush (P2 shall not be diluted). The P2 shall be evenly laid on the wall: to check it please watch it against the source of light **(9)**.

ATTENTION: since the P2 is difficult to be removed once dried, clean the brushes with soap immediately after use.

Up to this moment, the procedure is identical for both kinds of junction systems.



CLASSIC JUNCTION

With the classic junction system the panels are perfectly laid one next to the other with no overlap. It is easy and fast to apply. This system is best when the walls are very rough or when the temperatures vary a lot. In this case after a few days small crevices might occur. These can be corrected by hand.



TATTOO WALL JUNCTION

This system presents at the end of the procedure a very small overlap of about 0,5 mm or less. It is best on very rough surfaces. If correctly applied it does not need retouches done by hand. The prints must previously have been coated with white P1 or printed with final matt white.



P3 PRODUCT

The P3 is a composition of acrylic resins and quartz dusts. It is to be catalyzed with the special 10% catalyst. Before using it the catalyst must be well stirred to perfectly melt all the quartz, which shall fluidly blend with the floating resin. It is very important to only catalyze the amount of P3 that you are able to use in 20 minutes: this is the 'opening' time of the P3. If you apply the catalyzed P3 later than the first 20 minutes, you might have an unwanted whitening effect, instead of a complete transparency. This is why special attention shall be given to P3.



CLASSIC JUNCTION

Sign with a pencil the area where the first and the second TATT00-WALL panels will be placed. Place the silicon stripe exactly between the first and the second panel. Make sure that the silicon paper is not sticking to the already present P2 **(10)**. Apply the first panel **(11)** and check the references signed with pencil and the vertical center using the silicon junction stripe **(12)** holding the bisilicon paper together with the printed TATT00-WALL paper. It is important in this step that the paper does not stick to the P2.



When you have checked that the panel is correctly centered, please fold 10 cm of bisilicon paper **(13)** and start applying the prints on the free area **(14)**.



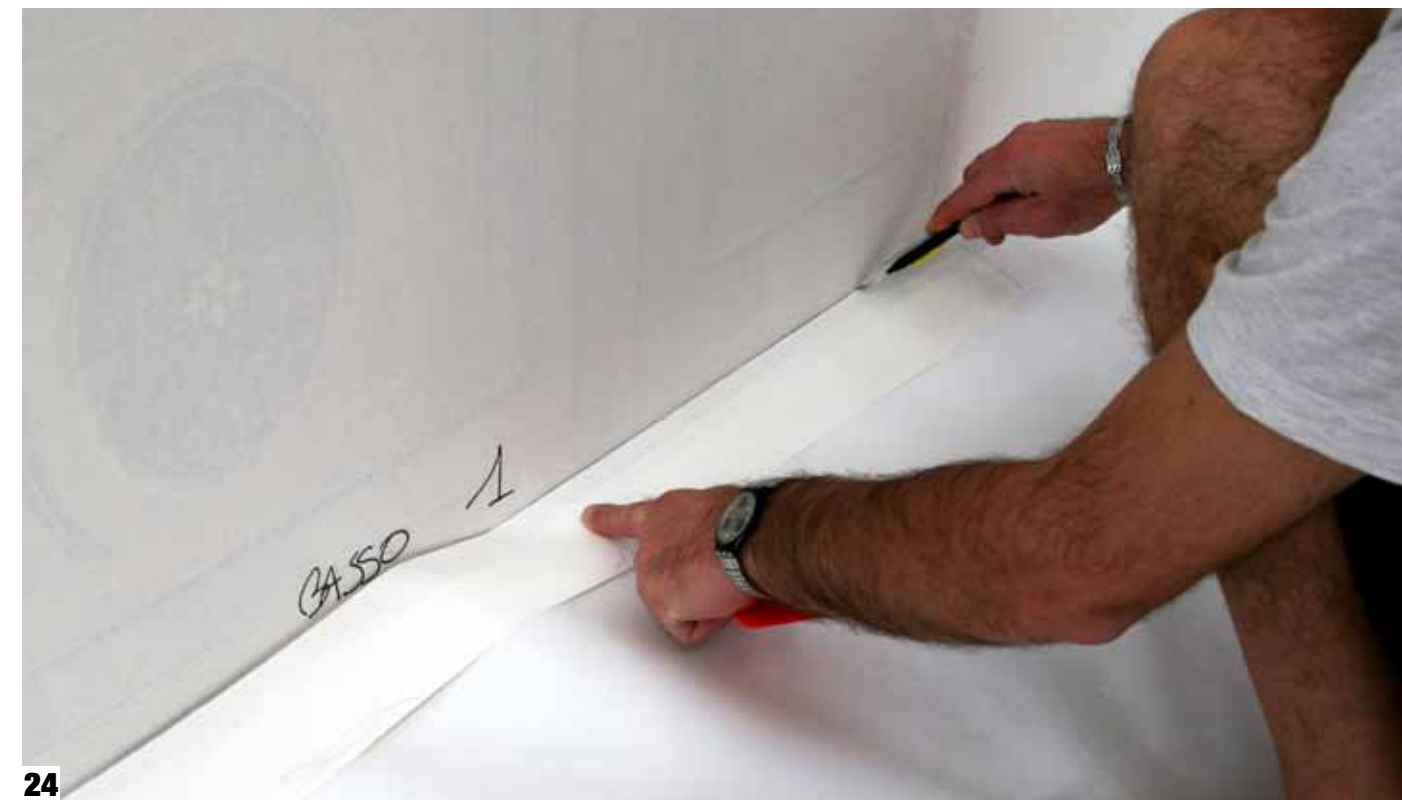
Hold the printed paper away from the wall, get rid of half of the bisi-
licon paper and continue the appli-
cation on the rest of the free area
(15). Continue with the TATTOO-
WALL application pressing the sur-
face of the paper with your hands,
from the middle towards the sides
to let the air out **(16-17)**.



Please continue until you get rid of all the bisilicon paper **(18-19-20)**.



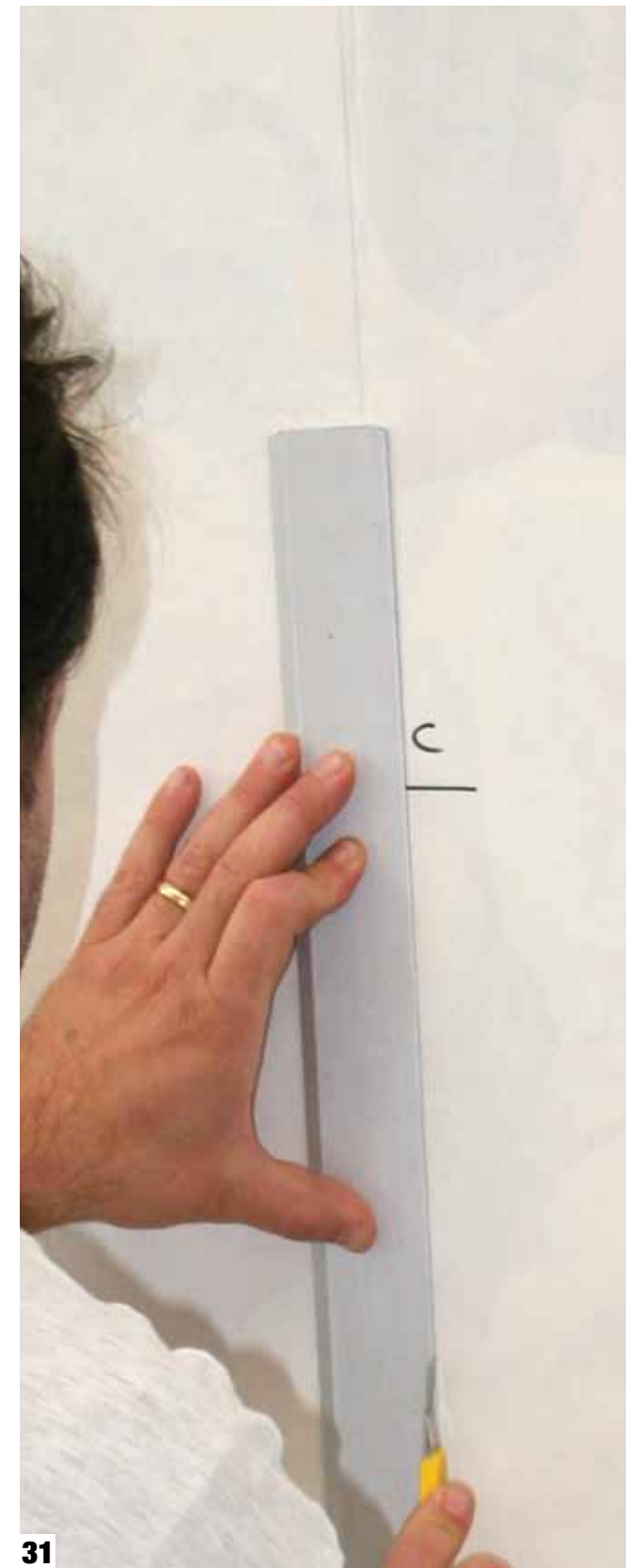
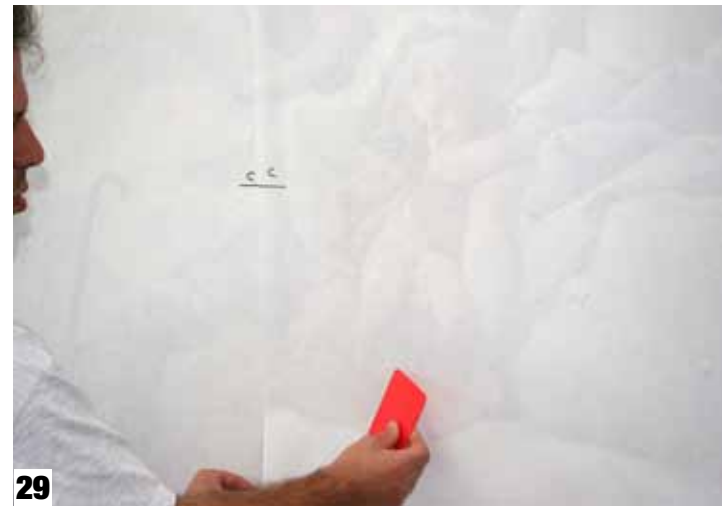
Complete the smoothing of the panel with your hands **(21)**, complete the process by pressing the surface of the paper with a roll brush or with a spatula on top of the entire panel **(22)**. At the end cut away the unneeded parts on the edges **(23-24)**.



Get ready to place the next panel checking the progressive number and cutting off the first 5 cm of bi-silicon paper **(25)** so that the panel start sticking to the wall. Check the correct positioning in both vertical and horizontal way **(26-27)**.



Proceed by eliminating the bisilicon paper **(28)**, give the final touch to the decoration by pressing the TAT-TOOWALL paper with your hands or with the help of a roll brush or a spatula **(29-30)**. After the application of the first two panels, it is possible to cut the junction between one panel and the next exactly at the centre of the two panels, where you had previously inserted the junction silicon stripe **(31-32)**. It is important to have a really sharp cutter and to be very delicate at the moment of cutting, feeling how deep you are going. Please make sure you are not cutting the junction silicon stripe, otherwise you might ruin the wall.



Remove the junction silicon stripe
(33-34-35) and press the edges of
the panels you have just cut **(36-
37)**.



You can now start removing the TATTOOWALL paper, starting from one of the corners and pulling it close to the wall **(38-39)**. Continue by pushing the surface of the wall with brushes more or less hard according to the kind of wall surface **(40)**, starting with small rubber rolls of various densities. With this method, if you have more than 2 panels, please proceed by installing all the panels, then doing all the junctions, then removing all the TATTOOWALL paper and finally pressing the surface of the decoration with rolls or brushes.



TATTOO WALL JUNCTION

After printing, sign the references of the center and of the junction lines on the rear side of the TATTOOWALL paper, as described the first part of this manual. The first panel is to be applied as previously described, not forgetting to sign the reference of the center on the wall before removing the TATTOOWALL paper.



On the next panel make two cuts on the side of the overlap line until you reach the overlap line itself **(44)**, fold the paper inside the two cuts exactly where the junction line is **(45)**. We shall call these cuts ‘tags’. Make 3 tags, one in the center, one in the higher side and one in the lower side of the panel. Proceed with the application **(46)** making sure that the center sign and the junction line coincide with the line that remains free from the tape on the previous panel **(47)**.



The tags show the correct correspondence between one panel and the next throughout all the length of the decoration **(48-49)**. Now press the panel towards the wall with your hands or with a soft roll brush **(50-51)**. Remove the unnecessary TATTOOWALL paper on the sides, and then proceed to remove all the TATTOOWALL paper **(52)** – if there are other panels to apply, before removing the paper, sign the reference of the centers on the wall. Lightly press the surface of the decoration using a light brush in the area close to the junction **(53)**.



Make sure your cutter is very sharp and then start cutting the previously applied tape exactly in the free half millimeter area next to the tape itself **(54)**. While cutting the junction, remove the tape **(55)** so that you can check the precision of the junction **(56)**.



The application is now finished. Press the surface of the decoration with brushes of various softness, depending on how irregular the surface is.

If retouches are needed, proceed with acrylic colors. TATTOOWALL decorations can be treated with Graphic Report's transparent bi-component quartz varnish P3. Indoors we suggest to use P3 to reach a matt and rough effect. Outdoors we suggest to protect each decoration with transparent water based anti-UV coatings, which can be opaque or shiny depending on your needs.





murales digitale

www.tattoowall.it